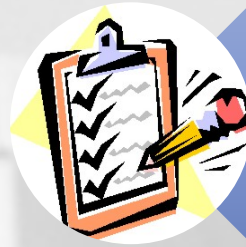


# What needs to be done now?



**IMPLEMENTATION OF  
NEW REQUIREMENTS**



**ASSESSMENT**



**RECERTIFICATION OF  
COURSES**



**PennState**  
Office for  
General Education



## IMPLEMENTATION OF NEW REQUIREMENTS

- Integrative Studies
- C or better in GQ and GWS
- GHA → GHW
- LionPATH implementation





## IMPLEMENTATION OF NEW REQUIREMENTS

# Inter-domain Courses

- An inter-domain course integrates, within one course, selected perspectives, concepts, information, and knowledge from two of the knowledge domains (GA, GH, GHW, GN, GS)
- Be at least 3 credits and each of the two knowledge domains will receive approximately equal attention
- Students may not fulfill all of the required work in a single domain with Inter-domain courses



**PennState**

Office for  
General Education



## IMPLEMENTATION OF NEW REQUIREMENTS

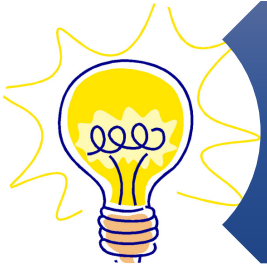
## Linked Courses

- Linked courses approach similar subject matter from different intellectual perspectives or are connected in some other purposeful way
- Each course used to satisfy the requirement must represent a different knowledge domain (GA, GH, GHW, GN, GS)
- Sets of linked courses may contain more than 2 courses to increase flexibility for students



**PennState**

Office for  
General Education



## IMPLEMENTATION OF NEW REQUIREMENTS

### Questions about:

- Integrative Studies requirement or courses
- C or better in GQ and GWS
- GHA → GHW
- LionPATH implementation



**PennState**

Office for  
General Education



## ASSESSMENT

- Hallmark of modern General Education programs/curricula
- Middle States requirement
- GQ and GH assessed in Fall 2016





## ASSESSMENT

### Table Activity

List two interesting assessment questions you would like answered about General Education.



**PennState**

Office for  
General Education



## ASSESSMENT

Questions about:

- Middle States requirement
- General Education assessment



**PennState**

Office for  
General Education





## RECERTIFICATION OF COURSES

- Senate process to be completed over three years (due SP19)
- Widely taught courses need discussion among the disciplinary community
- Courses will need to identify Key Learning Objectives and Domain Objectives/Criteria



# GenEd Learning Objectives

**EFFECTIVE COMMUNICATION**

**KEY LITERACIES** e.g. quantitative, health, intercultural, historical, aesthetic, linguistic, scientific

**CRITICAL AND ANALYTICAL THINKING**

**INTEGRATIVE THINKING**

**CREATIVE THINKING**

**GLOBAL LEARNING**

**SOCIAL RESPONSIBILITY AND ETHICAL REASONING**



**PennState**

Office for  
General Education



## RECERTIFICATION OF COURSES

### Table Activity

List two challenges of recertification and identify two strategies that may help.





## RECERTIFICATION OF COURSES

Questions about:

- Recertification Process
- Consultation



**PennState**

Office for  
General Education