

Budgeting at Penn State

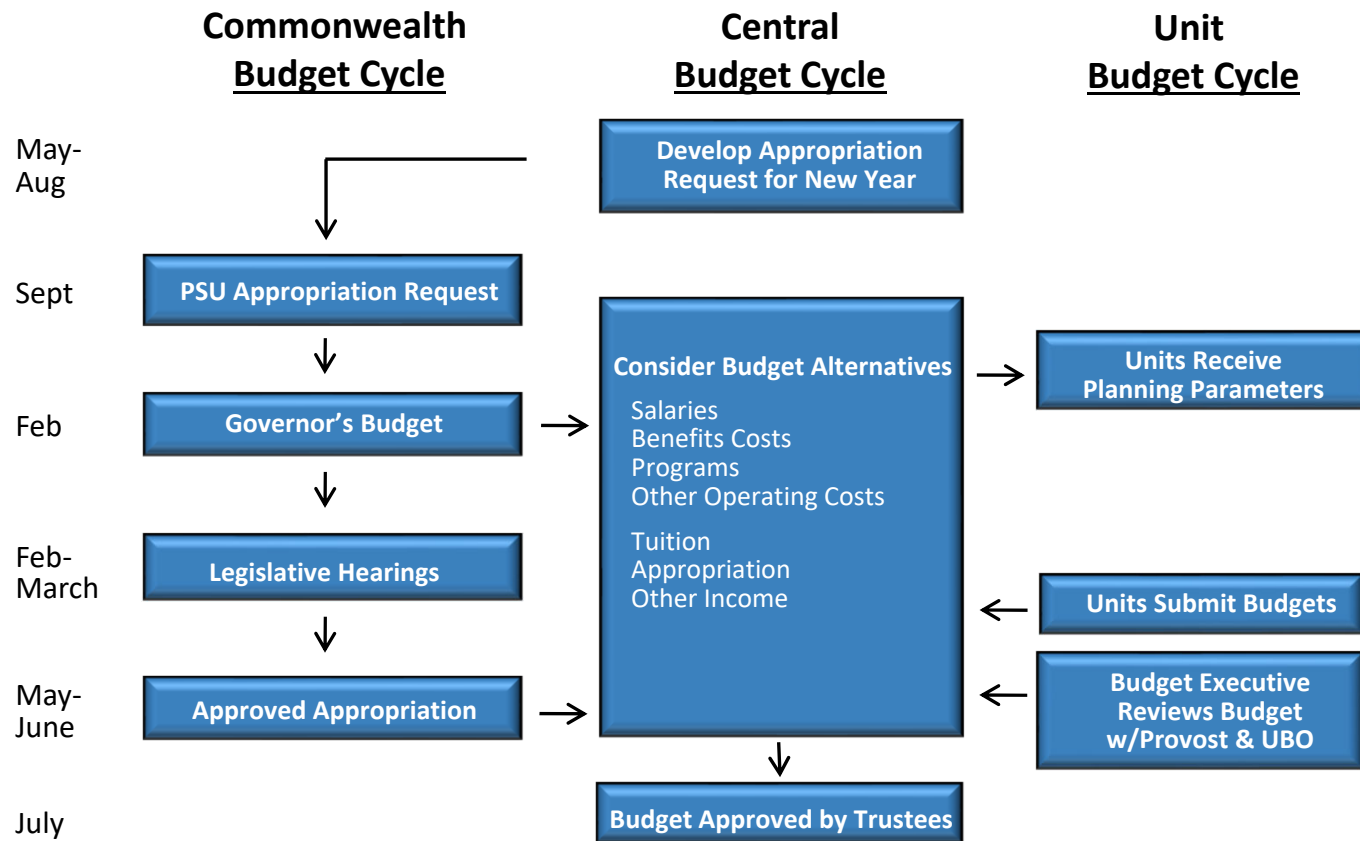
New Administrators Seminar Series

October 22, 2021

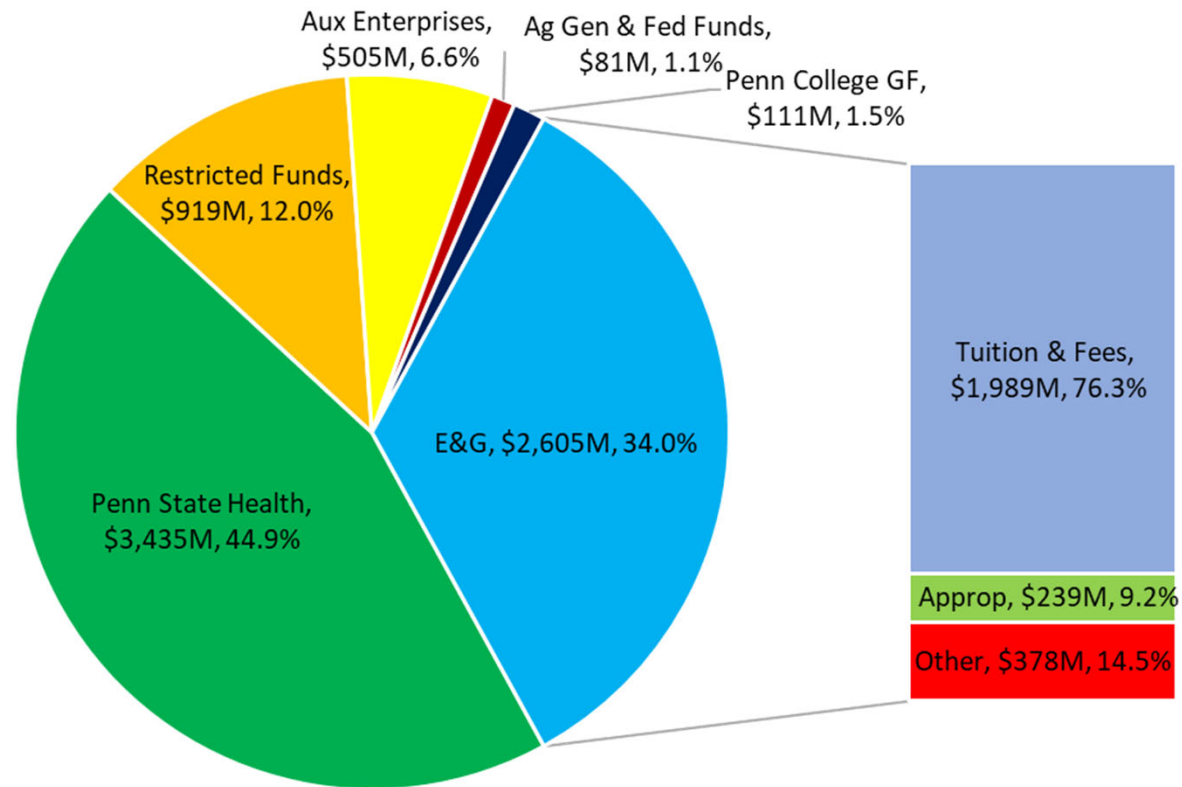


PennState

Commonwealth and PSU Budget Cycles



2021-22 Total Revenue: \$7.7B



2021-22 One Percent Increase Modules*

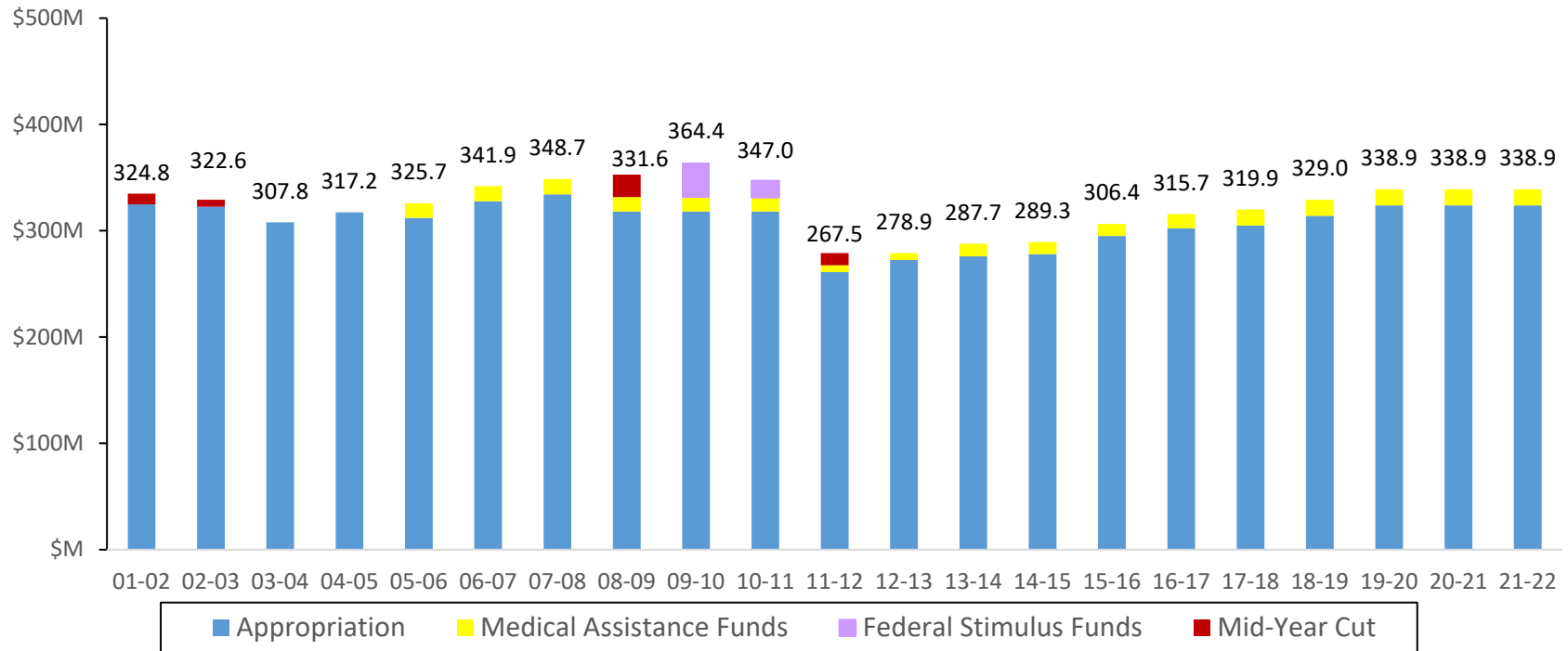
Salaries**	\$ 12 471 000
Appropriation (Excl. PSH, PCT)	\$ 2 421 000
Tuition	\$15 965 000

*E&G Only

**Includes Related Benefits



Historical State Appropriations

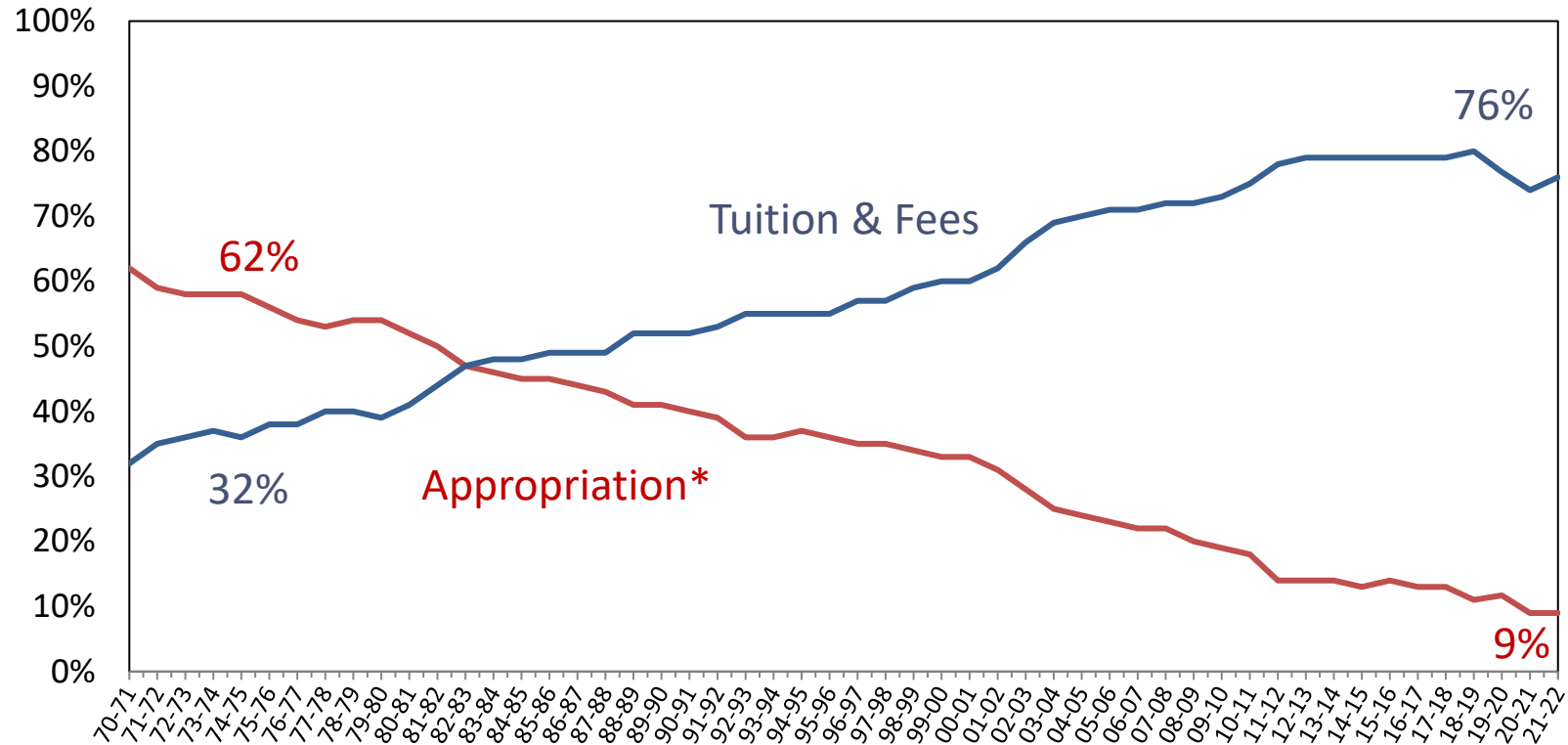


Note: Effective in 2017-18 amounts for Penn State Health/College of Medicine reflect direct state appropriations to Penn State for Medical Assistance, CURE, Penn State Cancer Institute, ASERT, and other line items. Any federal match funding is not included.



PennState

Appropriation vs. Tuition & Fees as a % of the General Funds Budget



*Includes Federal Stimulus Funds for 2009-10 and 2010-11.



2021-22 State Appropriation (\$000's)

	2020-21 Appropriation	Requested Increase*	2021-22 Requested Appropriation	Approved Change	Approved 2021-22 Appropriation
Penn State (excl PS Health & Penn College)					
General Support	\$242,096	\$7,263	\$249,359	\$0	\$242,096
Agricultural Research & Extension	54,960	3,298	58,258	0	54,960
Special Request: Economic Development	0	2,350	2,350	0	0
Total Penn State University	297,056	12,911	309,967	0	297,056
Penn State Health and College of Medicine	15,112	453	15,565	0	15,112
Pennsylvania College of Technology	26,736	802	27,538	0	26,736
TOTAL APPROPRIATION	\$338,904	\$14,166	\$353,070	\$0	\$338,904
% Increase			4.2%		0.0%

*PSU's September 2021 submission assumed a 6% appropriation increase for Ag Research & Extension, new funding to support economic development through Invent Penn State, and a 3% increase for all other line items.



Big Ten Public Universities (Main Campuses) 2020-21 Tuition & Fees

	<u>Resident</u>	Non <u>Resident</u>
Penn State	\$18 450	\$35 514
Illinois	16 862	34 312
Michigan	15 948	52 266
Rutgers	15 205	31 987
Minnesota	15 027	33 325
Michigan State	14 460	39 766
Ohio State	11 518	33 502
Indiana	11 221	37 600
Maryland	10 779	36 891
Wisconsin	10 742	38 630
Purdue	9 992	28 794
Iowa	9 606	31 569
Nebraska	9 562	26 692



Approved 2021-22 Tuition and Fee Schedule*

Approved Tuition Increases and Rates per Semester	PA Residents			Non-PA Residents		
	% Inc	\$ Inc	Rate	% Inc	\$ Inc	Rate
Lower Division						
University Park	2.50%	\$224	\$9,184	2.75%	\$481	\$17,973
Altoona, Berks, Erie, Harrisburg	2.50%	\$184	\$7,543	2.75%	\$336	\$12,550
Abington	2.50%	\$176	\$7,198	2.75%	\$319	\$11,935
Brandywine, Hazleton, Lehigh Valley, Schuylkill, Scranton, York, World Campus	2.50%	\$175	\$7,169	2.75%	\$316	\$11,805
Beaver, DuBois, Fayette, Greater Allegheny, Mont Alto, New Kensington, Wilkes-Barre	2.50%	\$165	\$6,776	2.75%	\$300	\$11,207
Shenango	2.50%	\$162	\$6,651	2.75%	\$294	\$10,995
Undergraduate Aggregate Increase	2.50%			2.75%		

Student Fee changes:

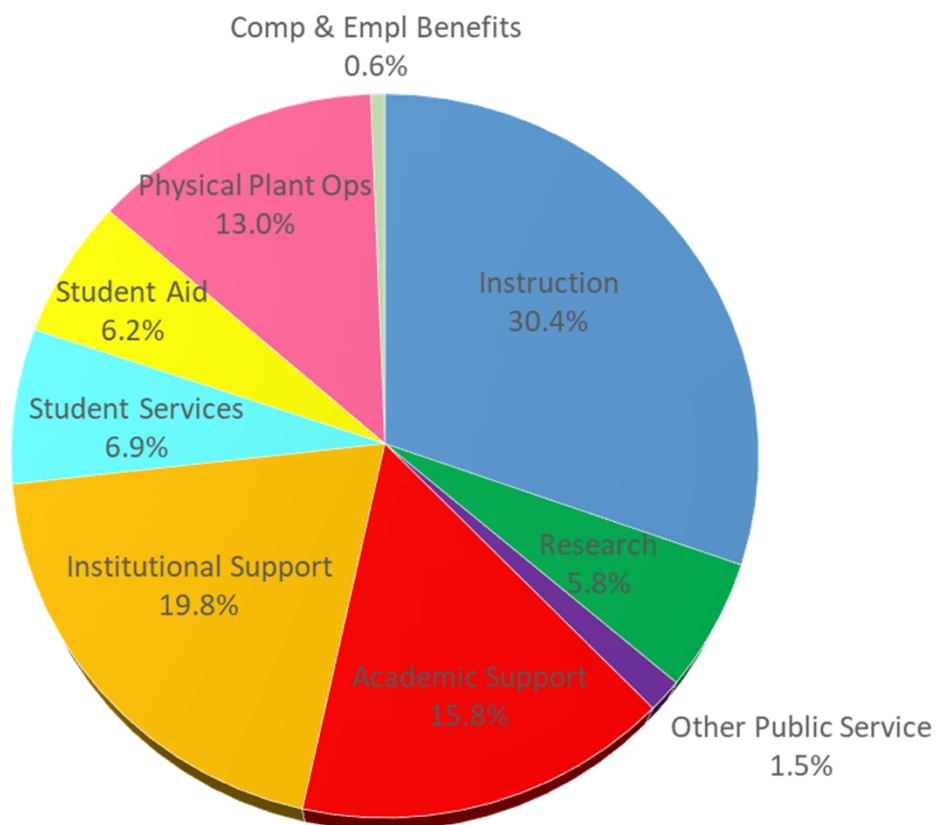
Student Initiated Fee: \$1 at campuses, \$0 at UP
(combination of former Activities and Facilities Fee)

*Tuition and fee rates apply regardless of the method of instruction (that is, whether in-person or otherwise) and will not be refunded in the event instruction occurs remotely for any part of the Academic Year.



PennState

2021-22 Education & General Expenditures by Function



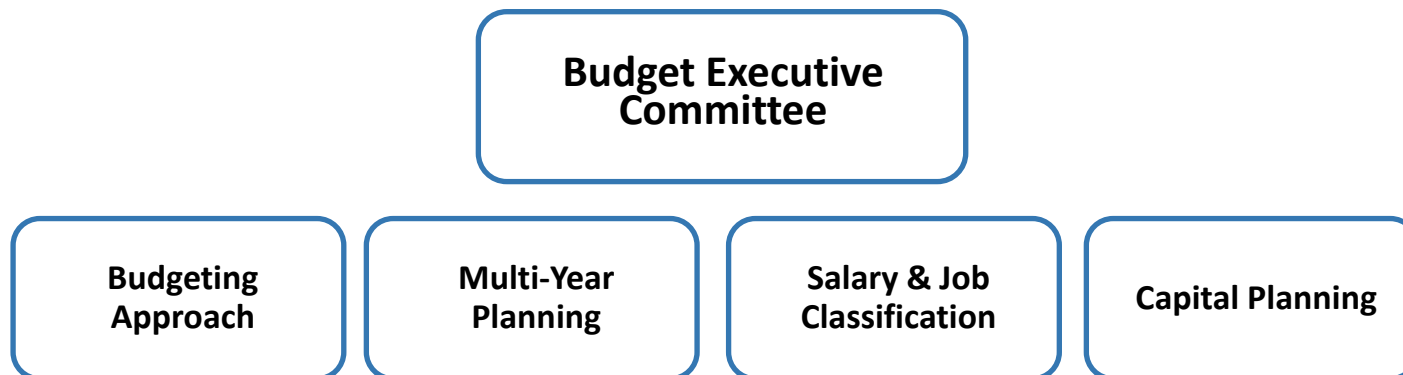
Strategic Budget Task Force

- ❖ Convened in January 2019 to examine the key issues related to Penn State's budget processes and make recommendations to allow multi-year budget planning of total university revenues and expenses
- ❖ Included broad representation from academic and administrative areas across the university
- ❖ Submitted nine recommendations for changes in the budget approach
 - Overall Budgeting Approach: Multi-year planning and budgeting all funds
 - Operating Budget: General and non-general funds
 - Capital Planning: Capital plan development and the intersection of operating and capital costs



Strategic Budget Approach Implementation & Working Groups

- ❖ The **Budget Executive Committee** oversees the implementation of the recommendations
- ❖ **Working Groups** develop the processes, policies, and technology necessary to implement the changes.



Additional Information

<https://budget.psu.edu/StrategicBudgeting/>

- ❖ Strategic Budget Task Force Report
- ❖ Working Group Charges
- ❖ Working Group Membership



Questions/Discussion

